

Solid State Pressure Sensor

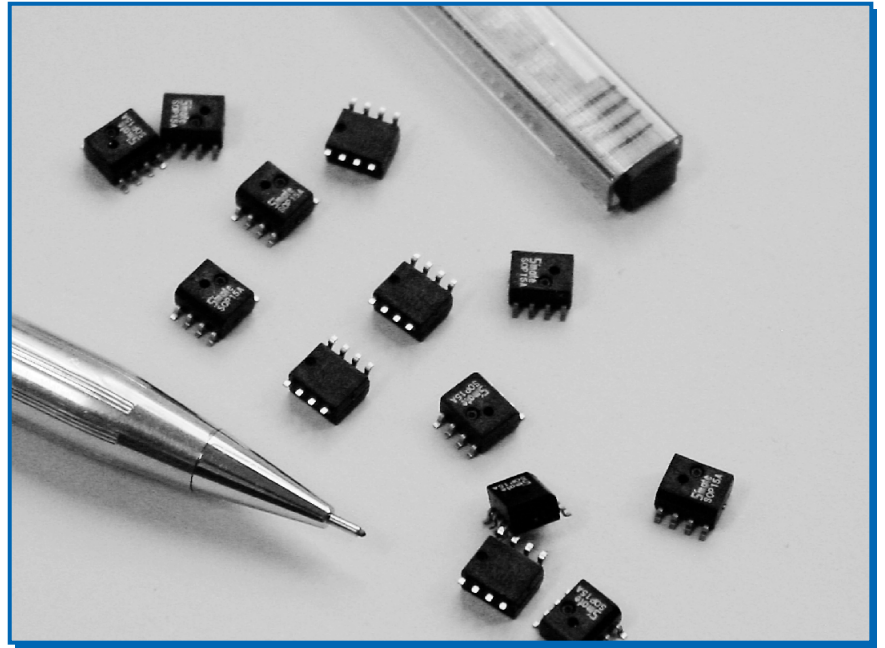
SOP SERIES

FEATURES

- Low Cost
- Small Size
- Reliable Semiconductor Technology
- Absolute Pressure

APPLICATIONS

- Sports Watch
- Altimeter
- Weather Station
- Automotive



DESCRIPTION

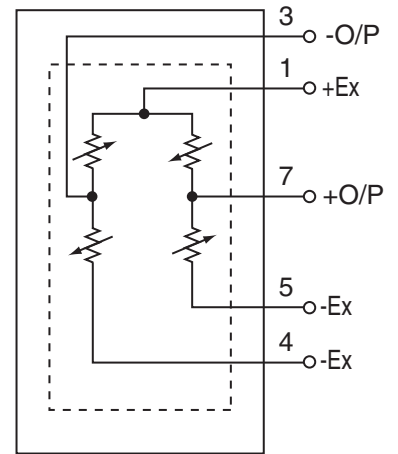
The SOP Series of OEM pressure sensors are silicon micromachined, piezoresistive sensor employing a new SO-8 package.

They were designed for extremely space sensitive applications where the sensing element is to be integral to the OEM products, and are intended for use with non-corrosive, non-ionic media. It is available for several custom features including pressure range, pin-out and media compatibility. Please contact factory for detail.

Characteristics

Supply Voltage: 5V_{dc} Ambient Temperature: 25°C (Unless Otherwise Specified)

Parameter	Min	Typ	Max	Units
Excitation Voltage	0	5	10	Volts
Span				
15 PSI	85	125	165	mV
100 PSI	65	100	135	mV
Offset	-50	0	+50	mV
TC Span				
15 PSI	-10	-15	-20	%FS/100°C
100 PSI	-15	-20	-25	%FS/100°C
TC Offset		±8		%FS/100°C
Linearity		±0.2		%FS
Bridge Impedance	4	5	6	K
Pressure Overload		3X		Rated Pressure
Operating Temp	-40		+125	°C
Storage Temp	-40		+125	°C

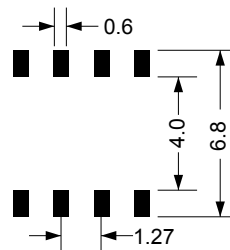
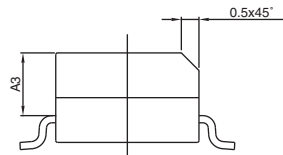
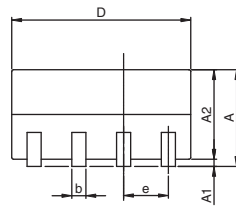
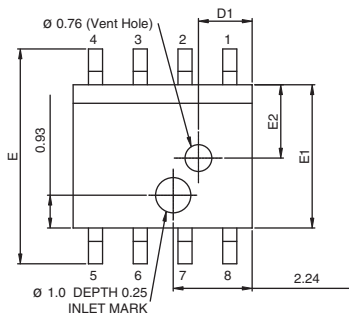


Equivalent circuit

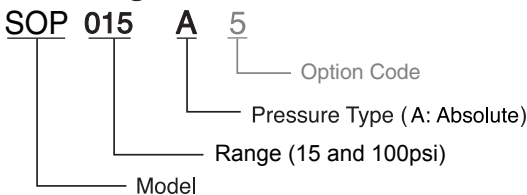
Notes:

1. Wetted material are PPA, Au, silicon, glass and RTV.
2. Temperature coefficient is measured from -20°C to 100°C.

Dimension



Ordering Information



SYMBOLS	DIMENSIONS IN mm		
	MIN	NOM	MAX
A	2.54	2.79	2.92
A1	0.10	—	0.25
A2	2.44	2.54	2.64
A3	1.68	1.78	1.88
b	0.33	0.41	0.51
C	0.19	0.20	0.25
D	4.98	5.08	5.18
D1	—	1.52	—
E	5.79	5.99	6.20
E1	3.96	4.06	4.17
E2	—	2.03	—
e	—	1.27	—
L	0.41	0.71	1.27
y	—	—	0.08

Note: All units in mm



400, Sec. 4, Ting Tsao Rd., Lu-Kang,
Chang Hua, Taiwan 505
TEL: 886 4 7716208
FAX: 886 4 7715540

Additional Products

- Digital Pressure Meter
- Pressure Transducer