

Ex Libris

www.exlibrisgroup.com

Ex Libris - USA

Toll Free: 1 877 527 1689
E-mail: info@exlibris-usa.com

Chicago Office

1919 N. Sheffield
Chicago, IL 60614-6001
USA
Tel: 1 773 404 5527
Fax: 1 773 404 5601

Boston Office

100 Galen Street
Watertown, MA 02472-4502
USA
Tel: 1 617 923 0160
Fax: 1 617 923 4613

Ex Libris - UK

The Annex, Harefield House
High Street, Harefield
Middlesex, UB9 6RH
UK
Tel: 44 1895 824 440
Fax: 44 1895 824 438
E-mail: exlibris@exlibris.co.uk

Ex Libris - Germany

Albert-Einstein Ring 19
D-22761 Hamburg
Germany
Tel: 49 40 89 809 0
Fax: 49 40 89 809 250
E-mail: info@exl.de

Ex Libris - France

24 Rue Saarinen, Silic 249
94568, Rungis Cedex
France
Tel: 33 1 57 02 12 50
Fax: 33 1 57 02 12 51
E-mail: exlibris@exlibris.fr

Ex Libris - Luxembourg

119 Avenue Gaston Diderich
L-1420
Luxembourg
Tel: 352 446 556
Fax: 352 453 676
E-mail: exlibris@exlibris.lu

Ex Libris - Poland

ALEPH Polska, Poland
Plac na Rozdrożu 3 m.4
00-584, Warszawa
Poland
Tel/fax: 48 22 628 83 99
E-mail: exlibris@aleph.pl

Ex Libris - China

B1020, COFCO Plaza
8 Jianguomennei Avenue
Beijing 100005
China
Tel: 86 10 6526 3901
Fax: 86 10 6526 3972
E-mail: exlibris@exlibris.com.cn

Ex Libris - Australia

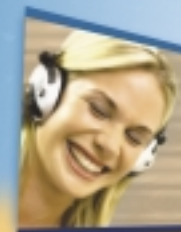
Suite 12, 8 Greenhill Road
Wayville, South Australia, 5034
Australia
Tel: 61 8 8372 7875
Fax: 61 8 8372 7894
E-mail: exlibris@exlibris-au.com.au

Ex Libris - Israel

Bldg. 8-9 Malcha Technological Park
Jerusalem, 91481
Israel
Tel: 972 2 649 9100
Fax: 972 2 679 8634
E-mail: exlibris@exlibris.co.il

Ex Libris - Brazil

Bibnet Bibliotecas Digitas Ltd., Brasil
Rua Vieira de Moraes 420 Cj 64
Campo Belo, Sao Paulo
04617-000-SP
Brazil
Tel: 55 11 5093 0168
Fax: 55 11 5093 3710
E-mail: exlibris@exl.com.br



ALEPH

INTEGRATED LIBRARY SYSTEM

*Il tempo sta passando qualche. Delle
preziosa fabrica, come già sono
essendo dalle loro Maitre brevis,
con questa mia è dargli Malattia,
favorirmi, di un A e se, cioè che io
già di voi volti, si venuto con loro
ciave, è nulla habere rivolto. à
habbi il suo Cors, non farà fare
di ferro, Ma io te mandarò un
bis di mandar il Sahero, è altho
a proposito. Sono sempre adenti
fianzi i Distruzione! mentre
chiamato le mani è retto*



ALEPH 500™

The ALEPH 500 fully integrated library system is a market leader in library automation. This complete state-of-the-art library solution, based on industry standards, reflects the Ex Libris philosophy of flexibility and ease of use. Based on an Oracle® database, the ALEPH 500 system provides full Unicode support, XML management reports, and API links to other top-tier applications. Four generations of ALEPH system design, developed over two decades, have produced loyal customers worldwide. Over 800 ALEPH systems are presently installed in libraries and consortia in 50 countries.

In the ever-evolving world of library automation, Ex Libris provides your organization with the perfect library solution:

Flexible — Modular components can be tailored to accommodate the requirements of your institution or consortium.

Easy to use — User-friendly workflows and intuitive graphical interfaces increase staff and patron efficiency.

Customizable — Modifiable components enable libraries and consortia of any size to create unique management systems.

Open — Based on industry standards such as OpenURL, XML, OAI, NCIP, and ODBC, Ex Libris products offer the ultimate in resource-sharing capabilities, full connectivity, and seamless interaction with other systems and databases.

The ALEPH 500 architecture includes staff client systems based on Microsoft® Windows® ; Web browsers for the public; and Z39.50 client systems for remote searching and retrieval.

Multilingual — Full Unicode support provides multidirectional and multiscrypt text capabilities.

Reliable — The inherent multi-tier client/server structure guarantees that ALEPH 500 will meet your needs today and in the future.

WEB OPAC

Our sophisticated, easy-to-use Web OPAC serves as the user's gateway to the ALEPH 500 system. As the Web OPAC is based on HTML pages, it can be customized to meet your library's specifications. Requiring only a standard Web browser on the user's workstation, the OPAC provides access to library information at any time and from any location, even during library system backup and reporting procedures. Patrons will find that searching for materials held locally or in other institutions, or simply checking items on their library card, is effortless.

Powerful, straightforward search tools offer patrons a choice of basic or advanced search capabilities, as well as a virtually unlimited number of browse and search indexes. Your library can use the standard range of indexes provided with the ALEPH 500 system or define its own set of access points.

The fully integrated ALEPH 500 system supports ISO interlibrary loan (ILL) functionality. This enables patrons to access electronic and Internet resources via MARC-based linking fields and the Z39.50 search function. Using the award-winning SFX[®] context-sensitive linking technology from Ex Libris, patrons can link to library-defined services. These dynamically created services can include links to citation databases, Web-based resources, local information repositories, the full text of an e-journal, and a range of other services.

ADAM, the ALEPH Digital Asset Module, enables libraries to manage digital assets and associated metadata in the ALEPH 500 environment. This extended, enhanced approach supports libraries as they move into the new realm of library material integration, in which books and serials coexist with video, image, and sound. Your library can now offer patrons fully integrated content that includes digital material and traditional library items.

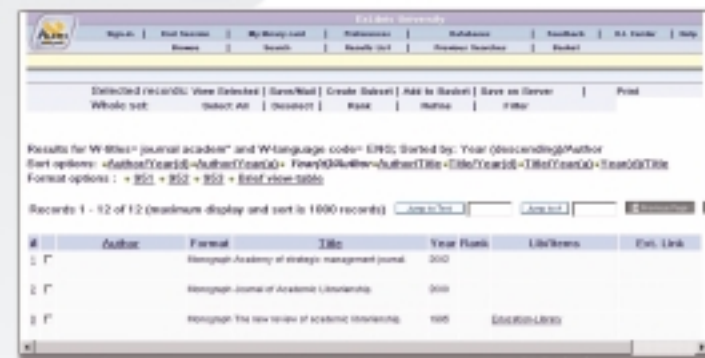
The enhanced ALEPH 500 Web OPAC enables patrons to browse metadata, perform full-text searches of textual material, and retrieve and view digital objects with ease. A thumbnail or icon indicates the type of material available. Technical rights and preservation metadata can be added by the library.

Unicode-based, ALEPH 500 provides multilingual and multiscript support. Your library can pick and choose from over 20 interface language options.

ALEPH 500 users can interact with the system in any of the languages selected by their library and can change their interface language preference at any time. Once specified, this language is linked to the patron's library card; thereafter, all library functions are carried out in the patron's language of choice.

A complete set of **patron empowerment features** enables patrons to perform a variety of tasks with ease:

- View current loans and renew materials, in accordance with library circulation policies
- Request materials by using functions such as holds, document-delivery, and interlibrary loan
- View loan history
- Define a default interface language and record-display format
- Save specific search results and search strategies to a personal e-shelf for later retrieval, and send this information by e-mail to other interested parties
- Define multiple SDI (Selective Dissemination of Information) profiles. The SDI service notifies patrons of availability of new publications of interest to them.



CATALOGING

The ALEPH 500 Cataloging Module integrates cataloging functions with all other aspects of the system. Interfacing with all major bibliographic utilities, data is stored in Unicode. A variety of MARC and non-MARC formats are supported simultaneously, providing patrons with a single database and staff with the ability to freely define local fields with corresponding validation and indexing. This adoption of cataloging standards ensures present-day compliance while setting the stage for the implementation of emerging standards such as FRBR.

To achieve cataloging efficiency, institutions can choose to employ the standard ALEPH 500 cataloging templates or their own customized templates. Default shortcut keys designed specifically to minimize the number of mouse clicks contribute to rapid keyboarding. Word-processing features expedite the cataloging workflow. Library-defined fix routines streamline the workflow by automatically generating cataloging data. ALEPH 500 checks and validates records as they are saved, and retains messages in a log for follow-up.



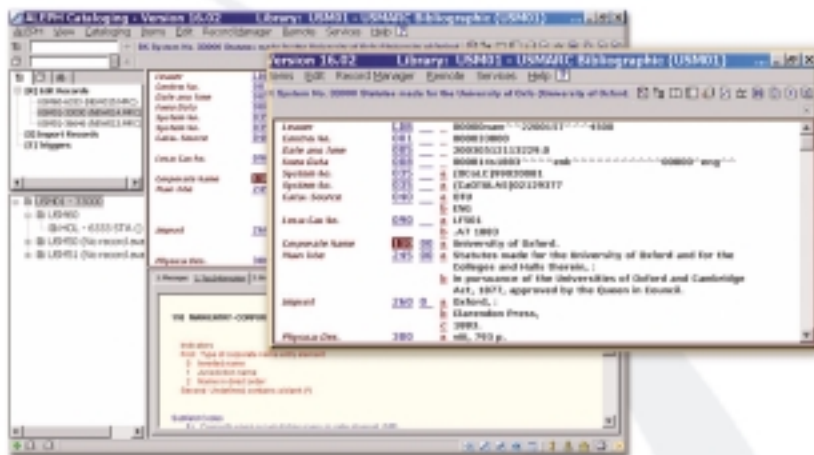
Indexing takes place in real time so that the benefits of cataloging are realized immediately. Newly cataloged records become instantly available for users in the Web OPAC. Records and data from vendors, bibliographic utilities (OCLC and RLIN), and other libraries can be imported through unique loader programs or via the Z39.50 protocol.

Ongoing database maintenance is facilitated as library staff can consult authority files, search the catalog, import and export records from external databases, edit multiple records, use standard copy-and-paste techniques, and index any tag in the bibliographic record. Authority control aids in maintaining a high-quality database.

By combining ADAM with the robust ALEPH 500 Cataloging Module, your library can manage its full range of digital items—books, serials, video, image, and sound. Your staff creates associated bibliographic data in the MARC format of their choice and adds relevant technical rights and preservation metadata.

FEATURES:

- Validates fixed-field data by record, tag, or subfield
- Supports global database changes by field, subfield, or specific word
- Reports records to be changed, on the basis of librarian-defined criteria
- Searches local and remote authority files within the cataloging environment
- Creates and maintains authority-to-bibliographic record links automatically
- Generates reports for managing the integration of authority and bibliographic records



ACQUISITIONS/SERIALS

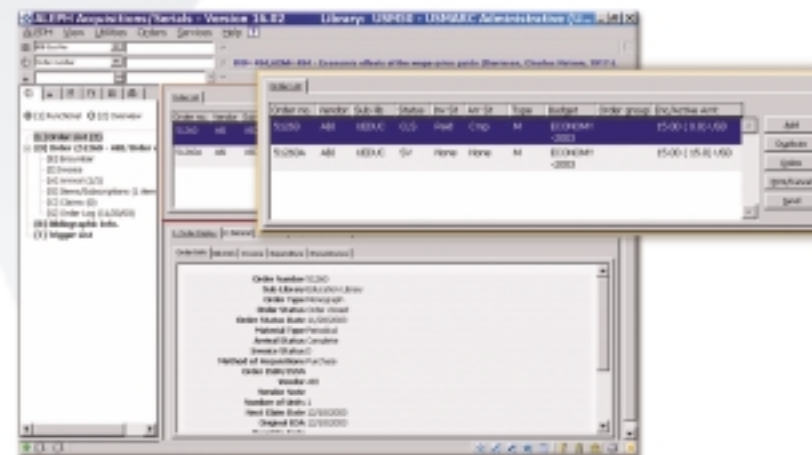
ACQUISITIONS:

The **point-and-click functionality** of the ALEPH 500 Acquisitions/Serials Module reduces navigation effort while seamless integration makes ordering, invoicing, claiming, and receipt of all materials easy and efficient. The Acquisitions/Serials order form enables staff to specify the library-defined requisition type (monograph, serial, or standing order) and determine the text to be included on the purchase order form. Orders can be generated either online or in batch mode.

Extensive use of EDI (Electronic Data Interchange) protocols in ALEPH 500 expedites acquisition functions (ordering, invoicing, and claiming). The system also includes a full suite of options for creating links to institutional financial data systems.

ALEPH 500 supports a hierarchical budget structure with an unlimited range of budgets and budget types (such as gifts, grants, and departmental budgets). A sophisticated, secure mechanism controls access to budgets on a global or individual basis.

ALEPH 500 performs conversions of foreign currencies to the local currency. The invoicing component enables institutions to issue VAT reports according to local regulations.



Digitizing your library's collection

FEATURES:

Ordering

- Optionally generates item records when staff create orders
- Creates an order log that records all ordering, receiving, and invoicing-related activities. The log includes the date, time, and name of the person performing the action.
- Defers orders when the cost is not covered by budget

Invoicing

- Provides access to vendor information, budgets, purchase orders, and arrival forms
- Automatically computes discounts for each order on the invoice

Claims

- Issued electronically or in print according to library-defined parameters
- Automatically generated for monographs and first issues of serials subscriptions according to defaults for material type, ordering, and shipment method
- Generated at library-defined intervals, which you can set according to the vendor and/or type of material

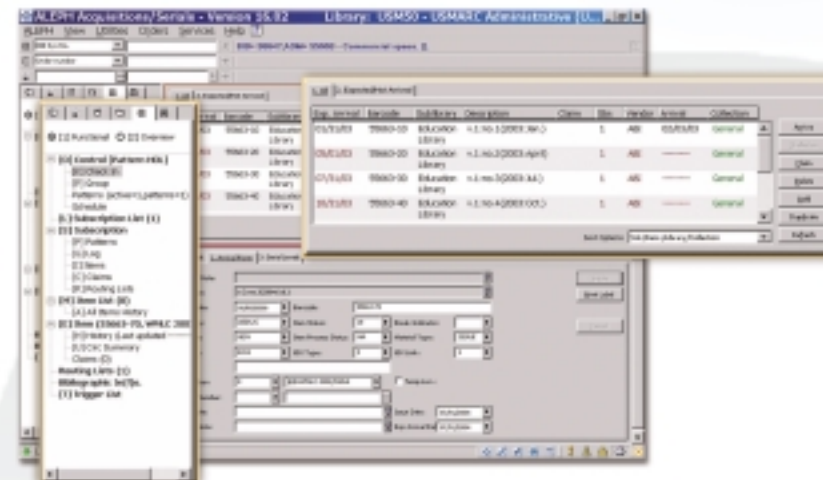
SERIALS:

The Acquisitions/Serials Module provides staff with seamless access to bibliographic and holdings data as well as information on orders, funding, and vendors. Staff can access serials data using a variety of library-defined index points, including SICI, ISSN, keywords, and titles.

The system supports the MARC 21 standard for prediction patterns and provides check-in prompts for all but the most "unpredictable" of publications. New ALEPH 500 customers are offered the option of importing existing check-in patterns established by other ALEPH 500 sites. Once established, prediction patterns can be easily modified to accommodate atypical issues.

Routing functions include multiple lists for a single copy of a title and tracking of routed items through the circulation system. When an issue is checked in, a routing slip listing the readers registered to the copy is printed automatically.

ALEPH 500 interfaces with two of the major binding programs in use, ABLE™ and LARS/LINCPlus. Staff can create new item records for bound volumes, select unbound items for binding, collapse individual item records into the newly bound volume, and assign new barcodes. ALEPH 500 automatically updates the status of items in bindery shipments. Returns of all items in a bindery shipment or individual items are recorded in a one-step procedure. ALEPH 500 automatically updates holdings information when a serial is reported as having been bound.



FEATURES:

- Issue check-in can be centralized or decentralized.
- Changes made in subscription status (such as cancellations) are automatically reflected in the number of copies expected.
- ALEPH 500 can "undo" the status of issues checked in erroneously.
- Category status such as missing, damaged, lost, or delayed can be defined.
- The system automatically generates subscription status messages for the OPAC through coded values in the 008 tag of the MARC Holdings records.

CIRCULATION

The quick and accurate Circulation Module enables staff to access all functions with a single click or equivalent keyboard command. This feature streamlines the workflow, increasing precision and efficiency. When determining due date and time, the module's flexible loan policy takes the library-defined patron status and calendar as well as the location of items into account. The system checks patron blocks and item requests instantaneously, ensuring the proper handling of materials.

An integrated cash system displays fines and other library-defined cash transactions and enables them to be concluded rapidly. Payments may be made in full, paid partially, or waived by authorized staff. A detailed audit trail provides accurate tracking of all cash transactions. Fines and fees may be exchanged with external accounting or collection systems.



ALEPH 500 allows you to manage short-loan items for periods as brief as 30 minutes, and supports both fixed and rolling short loans. Depending on library policy, patrons can make advance bookings on items linked to a library-defined schedule.

ALEPH 500 Materials Booking enables your patrons to reserve library material for specific times. Patrons will be pleased to learn that Materials Booking requests take priority over standard requests and that loan start and end dates are flexible enough to meet their specific needs. Permission to place a booking request is based on item and patron status.

Course Reading and Reserves functions provide access to both traditional and electronic course reserve materials. These functions include tools for managing course reserve collections and for creating and updating course reading lists. The Course Reading interface, available to patrons through the Web OPAC, affords access through many indexes, including bibliographic data, course name, course number, and instructor's name.

ALEPH 500 supports a sophisticated Reading Room sub-module that tracks materials loaned to patrons for use in the reading room. This functionality manages the transfer of materials from closed stacks to the reading room and within the reading room.

Integrated offline circulation ensures that library work continues smoothly even if the server connection is disrupted. Loan and return transactions can be recorded and saved in a local client workstation file.

ALEPH 500 interfaces with SIP2-compliant devices such as self-check and telephone renewal. Additional links are available to accommodate e-payment and RFID. The self-check function checks patron status and permits the loan and return of materials without the assistance of library staff.

Extensive circulation statistics and reports are part of the standard ALEPH 500 offering and include in-house use statistics. The ALEPH 500 Data Warehouse provides users with a functional reporting and querying environment. Staff will find the operational information, formatted in a reporting structure, to be highly accessible. By differentiating operational data and the analysis environment report generation becomes a fast and easy task.

FEATURES:

- Support of photocopy requests
- Production of fully customizable notices
- Smooth creation of patron records from other formats, by means of import facilities
- Support for a consortial environment through hierarchical patron records
- Offline circulation facilities

INTERLIBRARY LOANS (ILL)

ALEPH 500 includes a fully integrated Interlibrary Loan (ILL) Module that complies with the ISO 10160/10161 protocol and companion IPIG Profile.

Integrated with the Web OPAC and Circulation Modules, ILL services handle both outgoing and incoming ILL requests. Patrons can use the Web OPAC to place their requests and can view them through the system's patron empowerment features. All circulation functions are fully integrated with the Circulation Module.

ALEPH 500 ILL functions are fully integrated with other Ex Libris products, including MetaLib® and SFX. When patrons place a request through MetaLib and SFX, ALEPH 500 recognizes them as ILL users, on the basis of user attributes. Patrons can obtain material that is available from outside sources by submitting the request directly to their local library.

Built-in reports aid the library in effectively tracking the use of interlibrary loans in the system.

